



Athlete's Responsibilities during Sample Collection Session



01 Comply with sample collection procedures



02 Remain in sight of the Doping Control Officer (DCO) / Chaperone



03 Report immediately to Doping Control Station



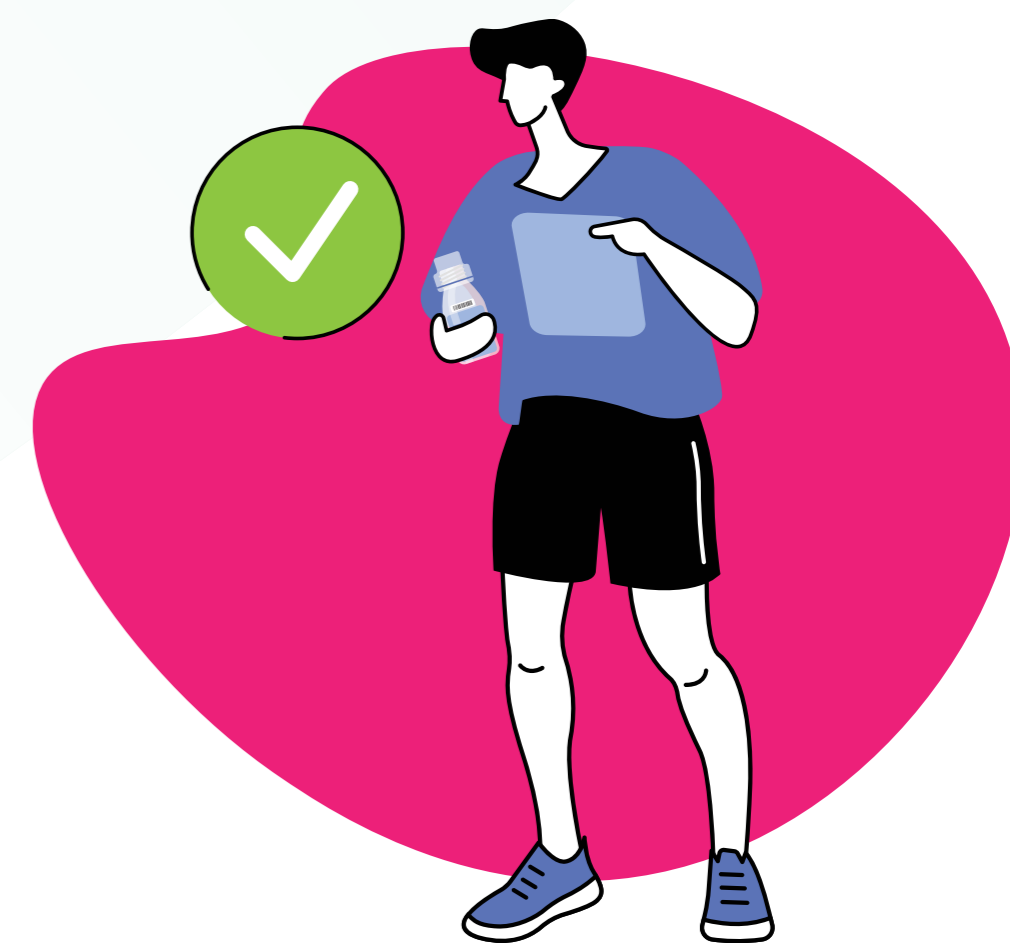
04 Bring Photo ID



05 Provide blood and / or urine sample(s)

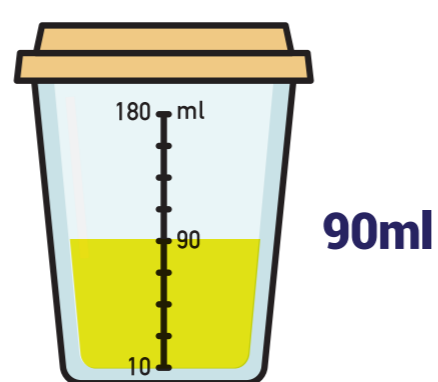


06 Retain control of the urine sample until it is sealed



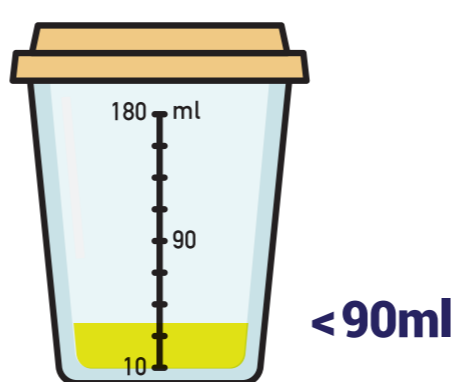
How much do you know about the urine sample requirements?

1. The minimum volume requirement



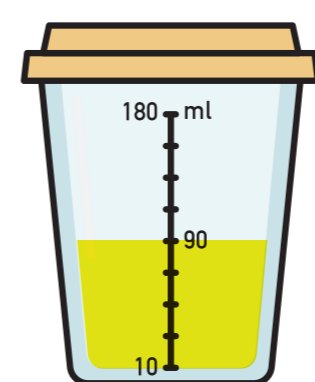
90ml

2. Partial sample procedures must be followed for sample less than 90ml

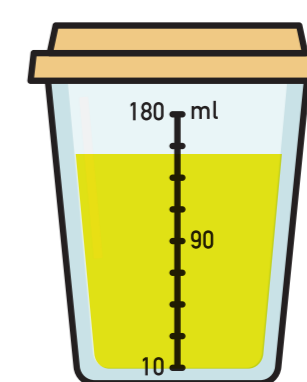


<90ml

3. The minimum specific gravity requirement measured by a refractometer



≥90ml to <150ml



≥150ml

